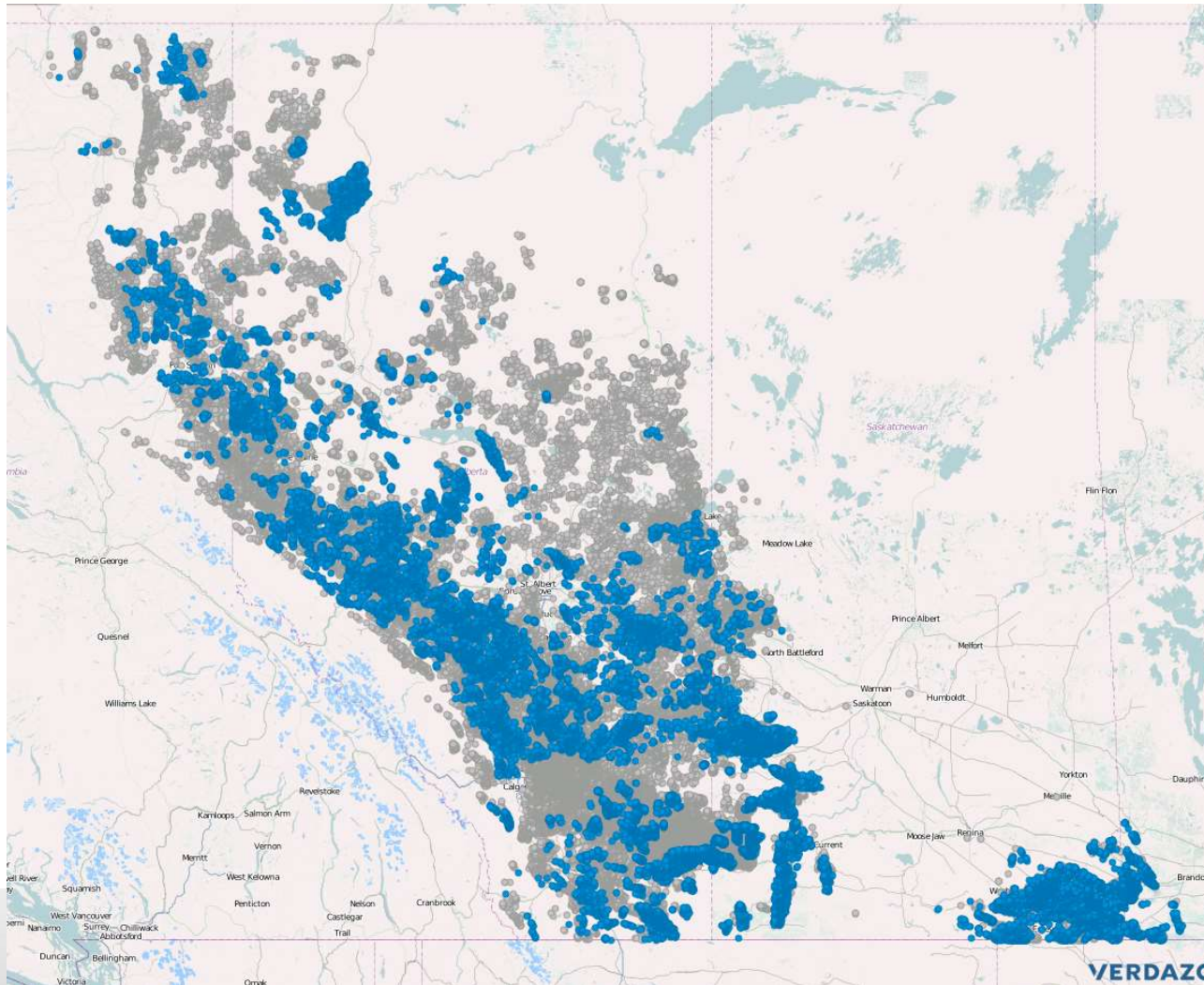


EPAC Profile in Western Canada



- 120 members
- Active in every play type across WCSB
- 65,000 wells producing 1.5 million BOE/day of crude oil, natural gas and liquids
- Approximately 40% of Montney, Duvernay and Deep Basin Production
- 6 of Top 10 operators in 2017 (meters drilled)

Visualization and numbers: Verdazo Analytics
Data: I.H.S. information hub

Note: blue dots represent EPAC Member wells